

0 245 490 980  
Feet  
1 inch equals 980 feet



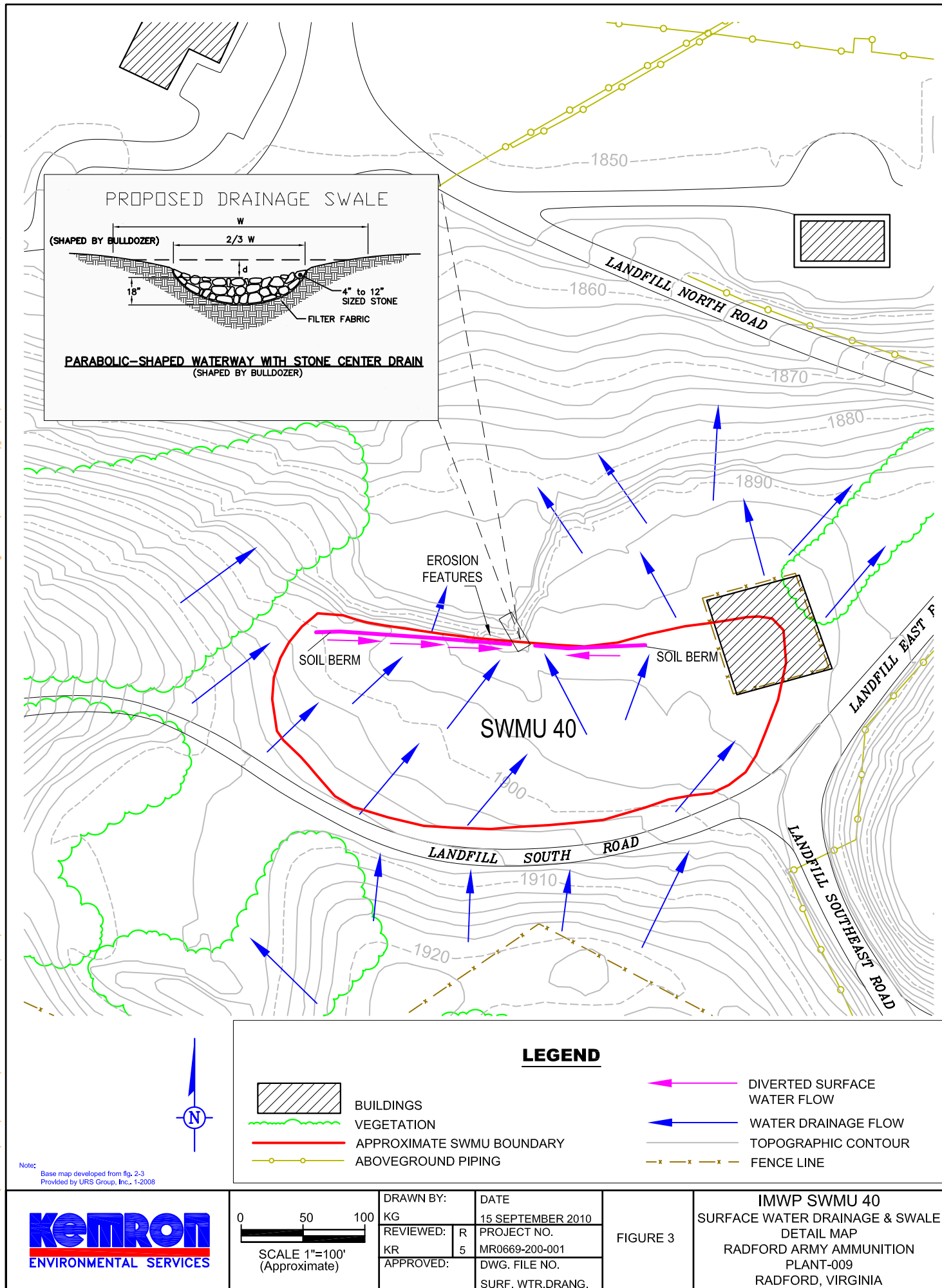
Source: Google Earth; Imagery Date: February 1, 2007

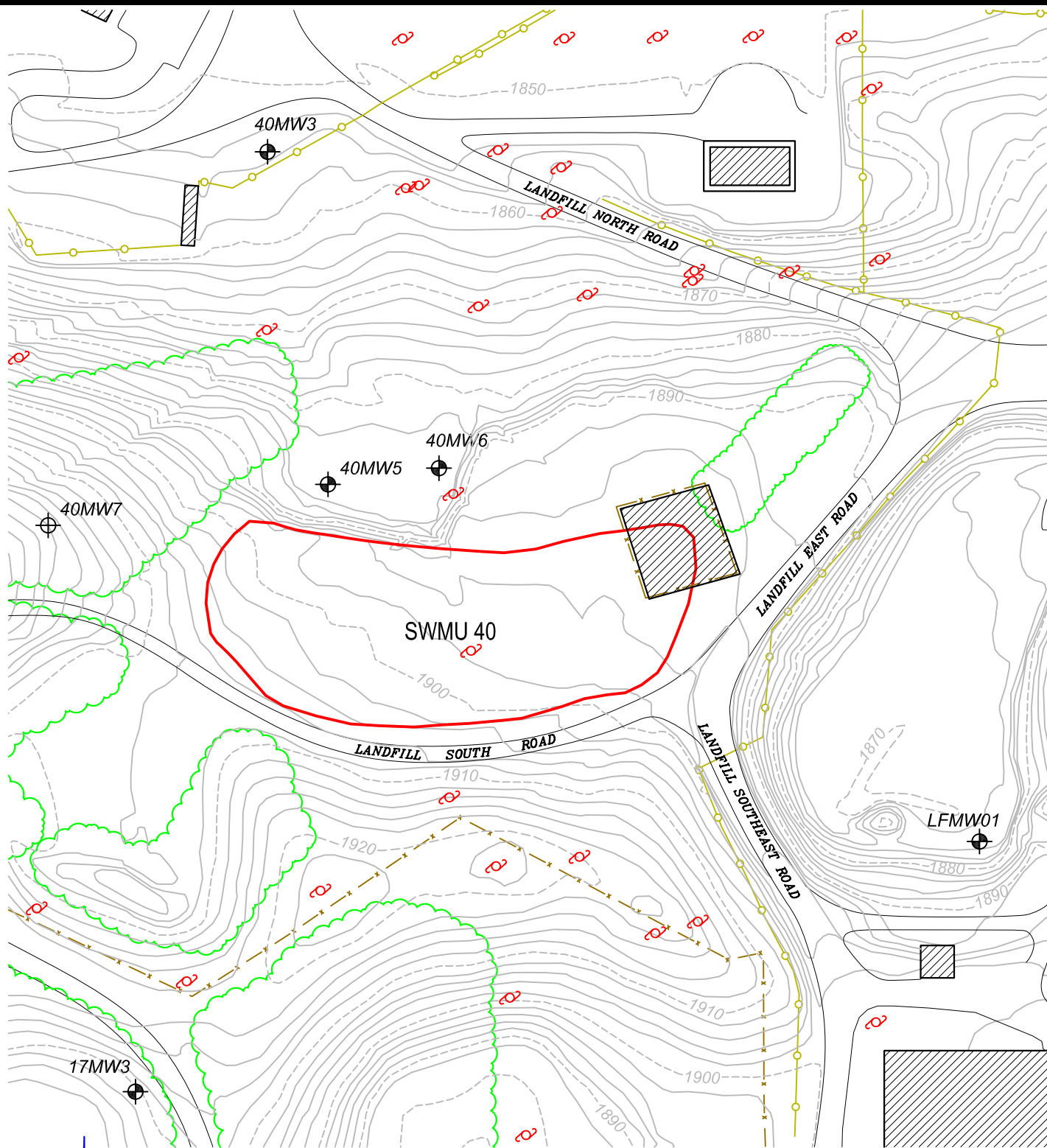


KEMRON Environmental Services  
1359-A Ellsworth Industrial Blvd.  
Atlanta, GA 30318

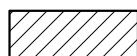
PROJECT NO. RADFORD		DRAWING DATE: 11/22/2010	
DESIGNED DRP	SITE LOCATION MAP SWMU 57 and SWMU 40		
DETAILED DRP			
CHECKED KR	LOCATION: RADFORD ARMY AMMUNITION PLANT, RADFORD, VIRGINIA	FIGURE:	1







### LEGEND



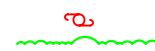
BUILDINGS



MONITORING WELL LOCATION



PLANNED NEW MONITORING  
WELL LOCATION



OVERHEAD ELECTRIC POLE



VEGETATION



APPROXIMATE SWMU BOUNDARY



ABOVEGROUND PIPING



TOPOGRAPHIC CONTOUR



FENCE LINE

Note: Base map developed from fig. 10-2.  
Provided by URS Group Inc., 1-2009

**KETRON**  
ENVIRONMENTAL SERVICES

0 60 120  
SCALE 1"=120'  
(Approximate)

DRAWN BY:

KG

REVIEWED: R

KR

APPROVED:

DATE

23 AUGUST 2010

PROJECT NO.

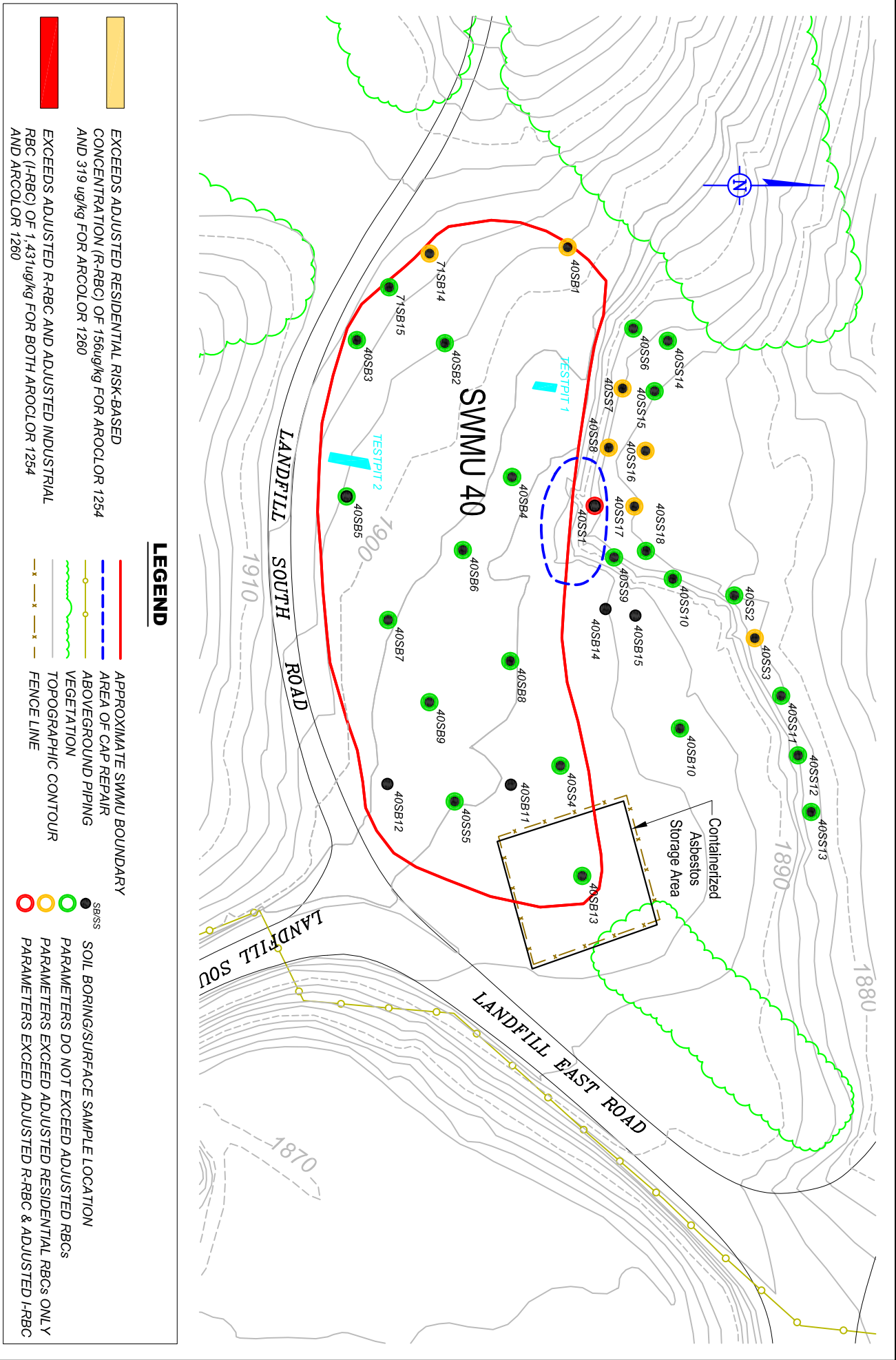
MR0669-200-001

DWG. FILE NO.

SWMU 40

FIGURE 4

**IMWP SWMU 40**  
PLANNED WELL LOCATION  
RADFORD ARMY AMMUNITION  
PLANT-009  
RADFORD, VIRGINIA



Note: Base map developed from fig. 2-2 Provided by USGS Group, Inc. 1-2008

**KETPROT**  
ENVIRONMENTAL SERVICES

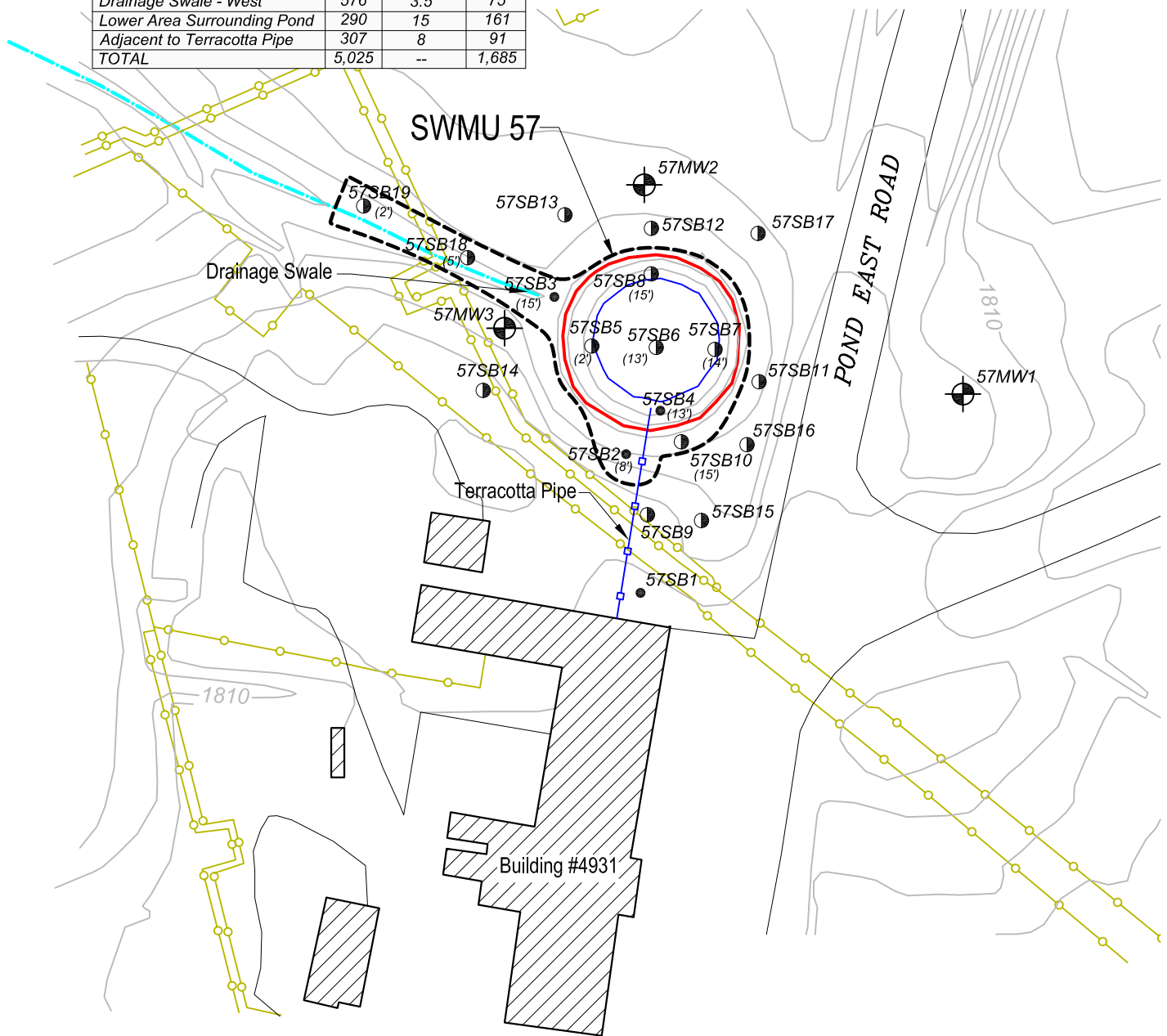
0 40 80  
SCALE 1"=80'  
(Approximate)

DRAWN BY:	KG	DATE
REVIEWED:	R	23 AUGUST 2010
APPROVED:	5	PROJECT NO. MR0669-200-001
		DWG. FILE NO. SWMU 40. SITE MAP

FIGURE 6

IMWP SWMU 40  
LOCATION OF CORRECTIVE  
MEASURES  
RADFORD ARMY AMMUNITION  
PLANT-009  
RADFORD, VIRGINIA

EXCAVATION SOIL VOLUMES			
Location	Area (sq ft)	Average Depth (ft)	Volume (BCY)
Within Pond Area	2,898	11	1,181
Asphalt Berm	378	2*	28
Drainage Swale - East	576	7	149
Drainage Swale - West	576	3.5	75
Lower Area Surrounding Pond	290	15	161
Adjacent to Terracotta Pipe	307	8	91
TOTAL	5,025	--	1,685



### LEGEND

- |  |                                 |  |                     |
|--|---------------------------------|--|---------------------|
|  | MONITORING WELL LOCATION        |  | BUILDINGS           |
|  | RFI SAMPLE LOCATION             |  | TERRACOTTA PIPE     |
|  | SSP SOIL SAMPLE LOCATION        |  | ABOVEGROUND PIPING  |
|  | APPROXIMATE SWMU BOUNDARY       |  | VEGETATION          |
|  | EXCAVATION AREA                 |  | TOPOGRAPHIC CONTOUR |
|  | APPROXIMATE DEPTH OF EXCAVATION |  | DRAINAGE SWALE      |

Note: Base map developed from fig. 10-2.  
Provided by URS Group, Inc., 4-2008



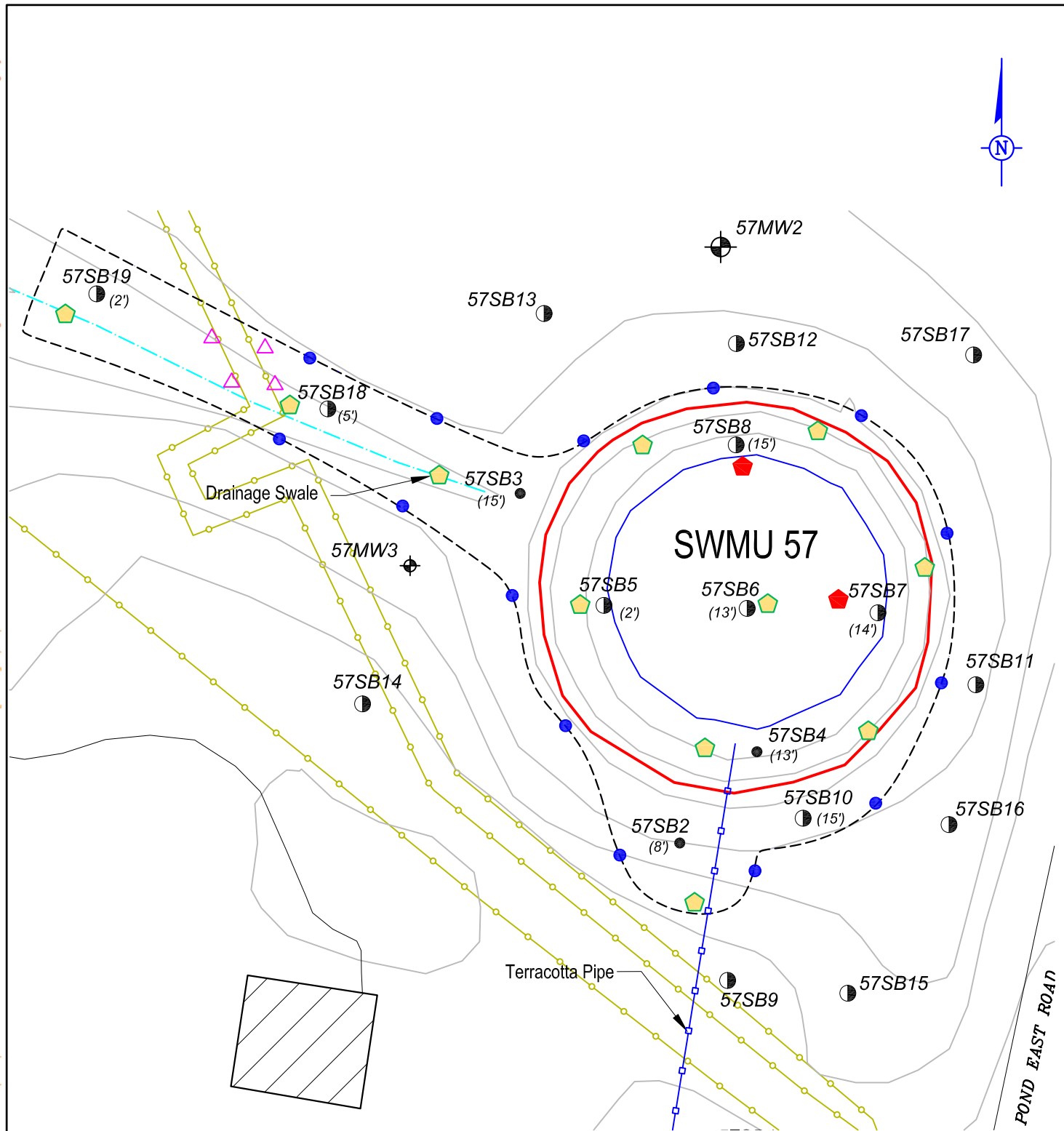
0 25 50  
SCALE 1"=50'  
(Approximate)

DRAWN BY:	DATE
KG	23 AUGUST 2010
REVIEWED: R	PROJECT NO.
KR	MR0669-400-001
APPROVED:	DWG. FILE NO.
	ESTIMATED EX. AREA

FIGURE 3

**SWMU 57 IMWP**  
ESTIMATED EXCAVATION AREA MAP  
RADFORD ARMY AMMUNITION  
PLANT-022  
RADFORD, VIRGINIA





## LEGEND

●	SIDEWALL CONFIRMATION SAMPLE(18)		BUILDINGS
◆	WASTE CHARACTERIZATION SAMPLE (Surface & Subsurface)	—○—	TERRACOTTA PIPE
◆	FLOOR CONFIRMATION SAMPLE(7)	—	APPROXIMATE SWMU BOUNDARY
▲	HAND AUGER BORING(9)	- - -	EXCAVATION AREA
⊕	MONITORING WELL LOCATION	(2')	APPROXIMATE DEPTH OF EXCAVATION
●	RFI SAMPLE LOCATION	—○—	ABOVEGROUND PIPING
●	SSP SOIL SAMPLE LOCATION	—	TOPOGRAPHIC CONTOUR
		- - -	DRAINAGE SWALE

Note: Base map developed from fig. 10-2. Provided by URS Group Inc., 4-2008

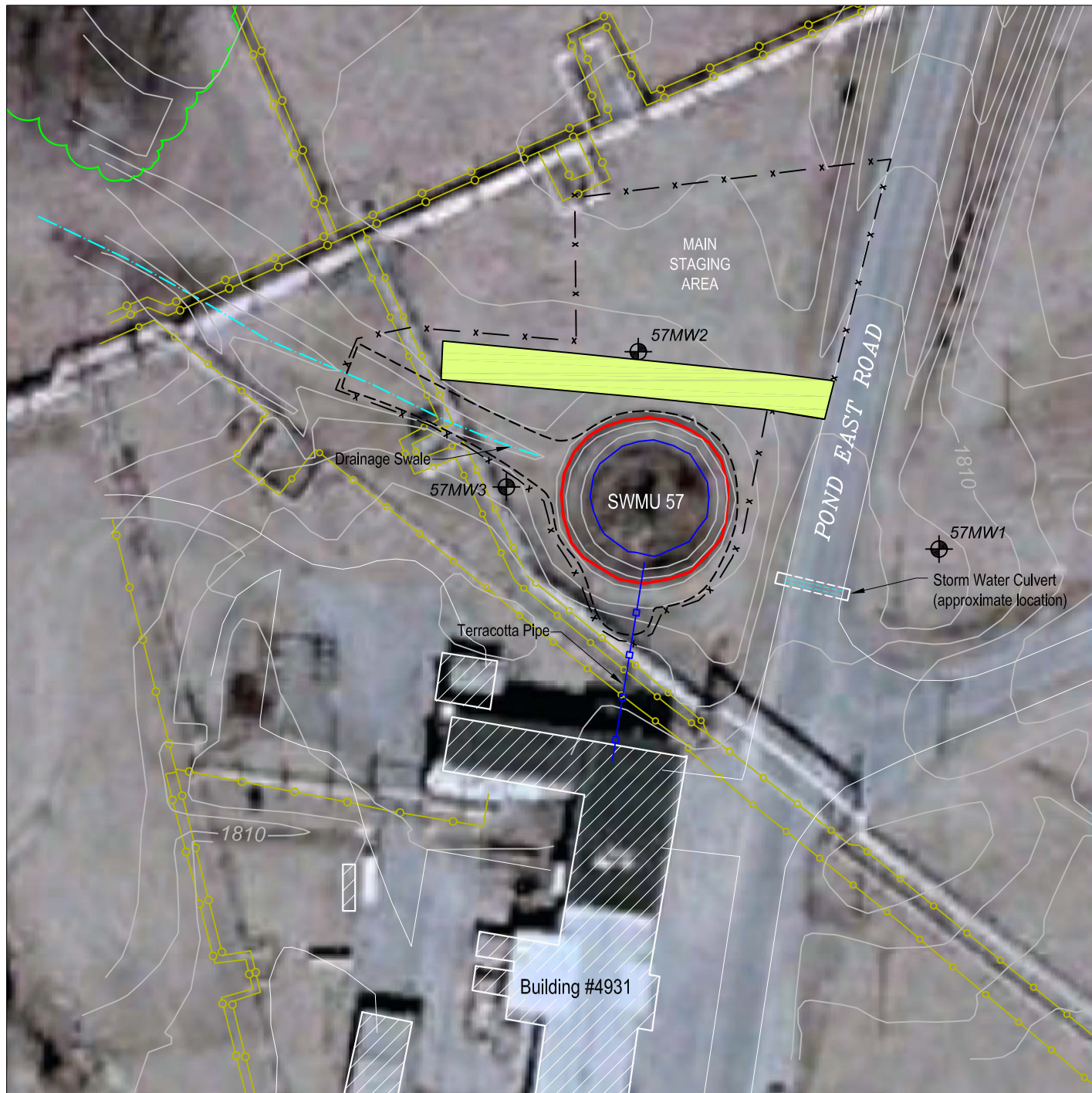
**KEMTRON**  
ENVIRONMENTAL SERVICES

0 10 20  
SCALE 1"=20'  
(Approximate)

DRAWN BY:	DATE
KG	23 AUGUST 2010
REVIEWED: R	PROJECT NO.
KR	MR0669-400-001
APPROVED:	DWG. FILE NO.
	PRP. SAMPLING PLAN

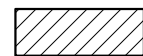
FIGURE 4

**IMWP SWMU 57**  
PROPOSED SAMPLING PLAN  
RADFORD ARMY AMMUNITION  
PLANT-022  
RADFORD, VIRGINIA



Note: Aerial Photo from Google Earth, 2010

### LEGEND



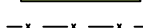
BUILDINGS



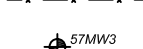
TERRACOTTA PIPE



CONSTRUCTION ENTERANCE/EXIT



SILT FENCE



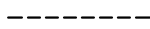
MONITORING WELL LOCATION



VEGETATION



APPROXIMATE SWMU BOUNDARY



EXCAVATION AREA



ABOVEGROUND PIPING



TOPOGRAPHIC CONTOUR



DRAINAGE SWALE

**KETRON**  
ENVIRONMENTAL SERVICES

0 25 50  
SCALE 1"=50'  
(Approximate)

DRAWN BY:

KG

REVIEWED: R

KR

APPROVED:

DATE

15 SEPTEMBER 2010

PROJECT NO.

MR0669-400-001

DWG. FILE NO.

PRP. STAGING AREA

FIGURE 5

**IMWP SWMU 57**  
PROPOSED STAGING AREA  
RADFORD ARMY AMMUNITION  
PLANT-022  
RADFORD, VIRGINIA